

# Accessories

## R95-180A



## 14-Pin Heavy Duty Socket

For use with the following NTE types:

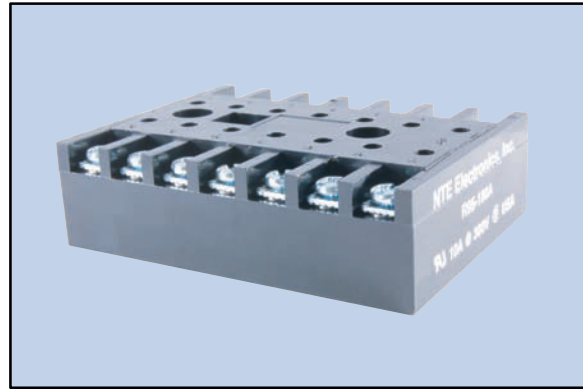
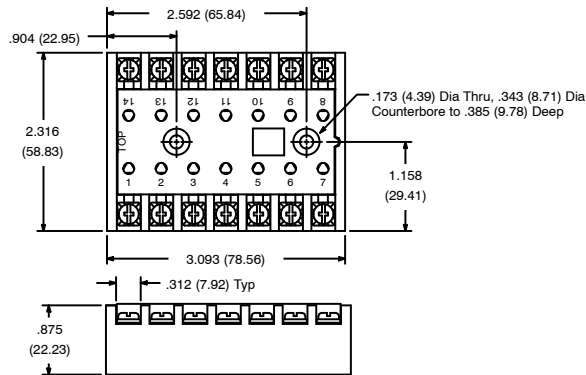
- R17 Series

### Features

- Surface Mount
- With Pressure Clamp Screws

### Electrical Rating:

300 Volts, 10 Amps



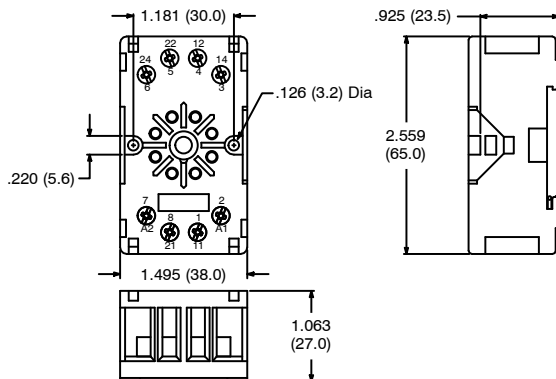
## R95-181

### Features

- DIN Rail Mount
- Finger Safe
- DPDT Applications

### Electrical Rating:

300 Volts (UL Rating for US), 10 Amps



## 8-Pin Octal Socket

