

# General Purpose Relays

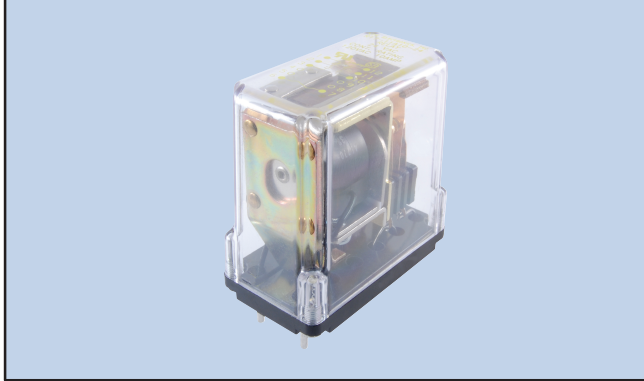
## R17 Series



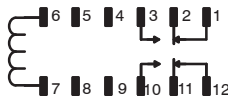
General Purpose, Industrial, 10 Amp, AC & DC, Plug-In Relays.

### Features

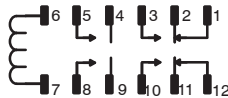
- DPDT, DPDT + 2 NO, & 4PDT Versions
- Plug-In Terminals
- Encapsulated Coil for Protection
- See-Thru Plastic Cover



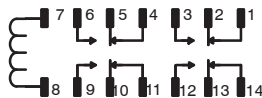
### DPDT, 2 Form "C"



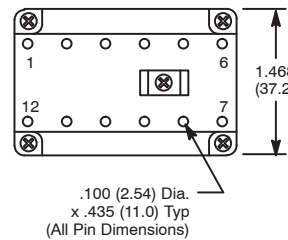
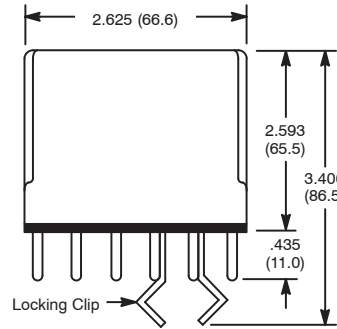
### DPDT + 2 NO, 2 Form "C" 2 Form "A"



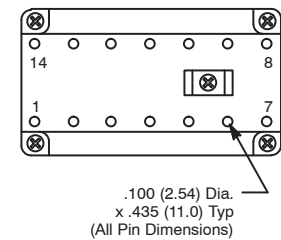
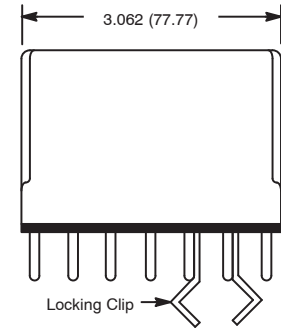
### 4PDT, 4 Form "C"



### D64a



### D64b



## Electrical Specifications

### Contact

**Contact Rating:** See chart  
**Contact Material:** Silver cadmium oxide, gold diffused  
**Contact Resistance:** 0.050 Max. initial

### Coil

**Coil Voltages:** See Chart  
**Pull-In Voltage (Min):** 85% of nominal Coil Vltg. (AC)  
 80% of nominal Coil Vltg. (DC)  
**Overvoltage (Max):** 110% of nominal Coil Vltg.  
**Resistance:** See chart

### Operational Characteristics

**Timing Values . . . . . Operate Time:** 25 mS Max  
**Release Time:** 20 mS Max

### Insulation Characteristics

**Dielectric Strength**  
**All Mutually Insulated Points:** 1500 VRMS  
**Insulation:** 1/4" over surface, 1/8" thru air

### Environmental Characteristics

**Rated Operating:** -10°C to +60°C

### Life

**Mechanical:** 10 million operations (no load)  
**Electrical:** 100,000 operations (at rated load)

### Weight

**Std:** 8.5 oz (241 grams) approx.

AC OPERATED						
NTE Type No.	Nom. Voltage	Contact Arr.	Coil Res. Ohms (Typ)	Nom. Power	Max. Contact Cur. @ 28VDC or 120VAC	Diag No.
R17-11A10-24	24VAC	DPDT	—	5VA	10A	D64a
R17-11A10-120	120VAC	DPDT	—	5VA	10A	D64a
R17-11NA10-24	24VAC	DPDT-NO	—	5VA	10A	D64a
R17-17A10-24	24VAC	4PDT	—	5VA	10A	D64b
R17-17A10-120	120VAC	4PDT	—	5VA	10A	D64b
DC OPERATED						
R17-11D10-24	24VDC	DPDT	250	1.8W	10A	D64a
R17-11D10-115	115/125 VDC	DPDT	6200	2.5W	10A	D64a
R17-11ND10-24	24VDC	DPDT-NO	250	1.8W	10A	D64a
R17-11ND10-115	115/125 VDC	DPDT-NO	6200	2.5W	10A	D64a
R17-17D10-24	24VDC	4PDT	250	1.8W	10A	D64b
R17-17D10-115	115/125 VDC	4PDT	6200	2.5W	10A	D64b

ACCESSORIES		
MOUNTING STYLES	DESCRIPTION	NTE TYPE NO.
SURFACE MOUNT	12-PIN 14-PIN	R95-180 R95-180A