



ELECTRONICS, INC.  
 44 FARRAND STREET  
 BLOOMFIELD, NJ 07003  
 (973) 748-5089  
<http://www.nteinc.com>

## NTE30100 LED – Dual Color High Efficiency Red/Yellow Green T-1 (3mm) Type Package

**Features:**

- RoHS Compliant
- White Diffused Lens
- Round Head with Flange
- Common Cathode Pin Configuration

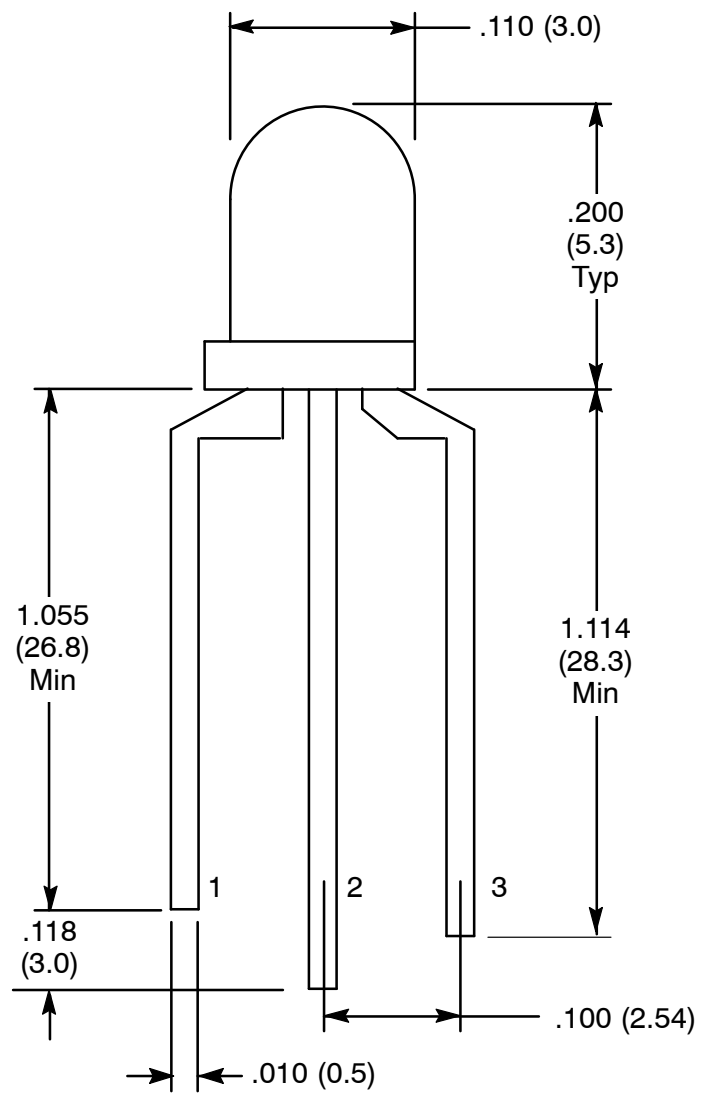
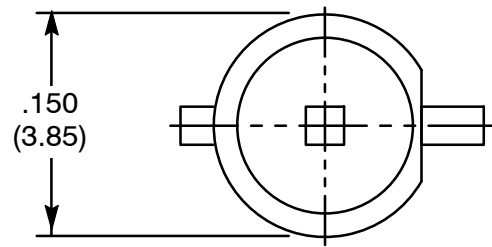
**Absolute Maximum Ratings:** ( $T_A = +25^{\circ}\text{C}$  unless otherwise specified)

Reverse Current, $I_R$ .....	100 $\mu$ A
Peak Forward Current (1kHz, Note 1), $I_{FP}$ .....	100mA
Derate Linear from $+25^{\circ}\text{C}$ .....	0.4mA/ $^{\circ}\text{C}$
Operating Temperature Range, $T_{opr}$ .....	$-30^{\circ}\text{C}$ to $+85^{\circ}\text{C}$
Storage Temperature Range, $T_{stg}$ .....	$-30^{\circ}\text{C}$ to $+85^{\circ}\text{C}$
Lead Temperature (During Soldering, 3mm from body, 5sec max), $T_L$ .....	$+260^{\circ}\text{C}$

Note 1. Pulse Width  $\leq 100\mu\text{s}$ , Duty Cycle  $\leq 1\%$ .

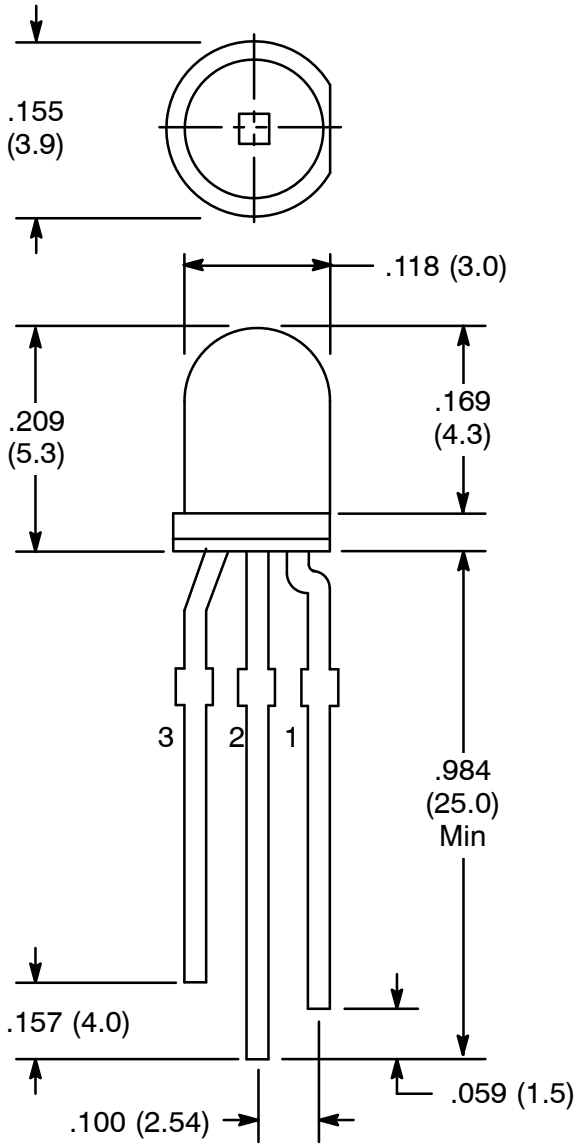
**Electro-Optical Characteristics:** ( $T_A = +25^{\circ}\text{C}$  unless otherwise specified)

Parameter	Symbol	Test Conditions	Min	Typ	Max	Unit
Beam Angle	$2 \Theta_{1/2}$		–	40	–	deg
Forward Voltage	$V_F$	$I_F = 20\text{mA}$	2.0	–	2.2	V
Luminous Intensity	$I_V$	$I_F = 20\text{mA}$	150	200	250	mcd
High Efficiency Red						
Yellow-Green			60	80	100	mcd
Peak Emission Wavelength	$\lambda_p$		630	–	635	nm
High Efficiency Red						
Yellow-Green			565	570	575	nm



- 1. Yellow Green +
- 2. Common Cathode Lead -
- 3. Red +

Alternate Package



- 1. Red +
- 2. Common Cathode Lead -
- 3. Yellow Green +