

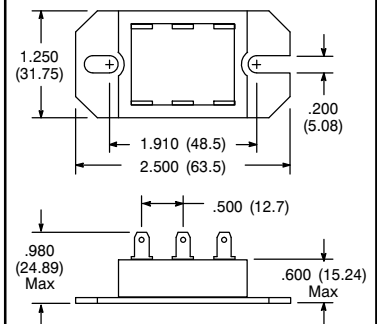
HYBRID MODULES

NTE No.	Description	Terminal Positions	Schematic Diagrams
5700	Single Phase, Hybrid Bridge, Common Cathode, Freewheeling Diode		
5701	Single Phase, Hybrid Bridge, Common Anode, Freewheeling Diode		
5702	Single Phase, All SCR Bridge		
5703	SCR AC Switch		
5704	Hybrid Doubler		
5705	SCR Doubler		

Symbol	Rating	Unit
V_{DRM}	1200	V
$I_T(AV)$ **	1.25	A
$I_T(RMS)$ **	28	A
I_{TSM} (1 Cycle)	375	A
P_{GT} (Max)	8	W
I_{GT} (Max)	60	mA
V_{GT} (Max)	2	V
V_{ISO}	2500	V
V_F (Max)	1.35	V
I_O ***	25	A
I^2T	580	A ² sec
I_{Hold}	100	mA
dv/dt	200	V/μsec
Terminal Torque	5	Nm

** Per SCR or Rectifier
 *** This Rating Applies to NTE5700, NTE5701, and NTE5702 Only

Diagram 452



NOTE: Can be used with Heat Sink NTE441A

* For transient protection, a Metal Oxide Varistor (MOV) may be connected externally across terminals AC1 & AC2.