

1 2 3 4 5 6 7 8

F

F

E

E

D

D

C

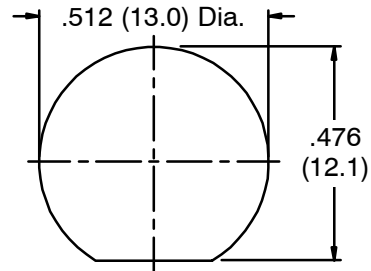
C

B

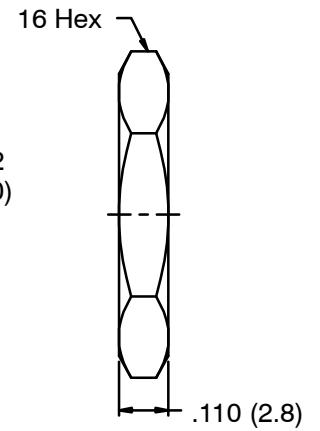
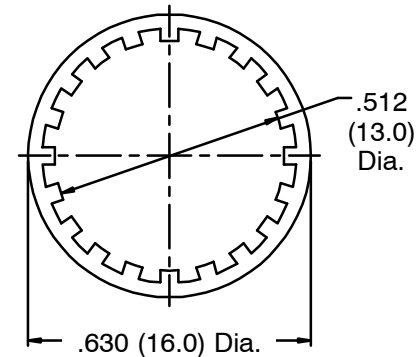
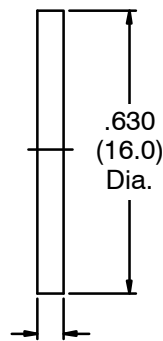
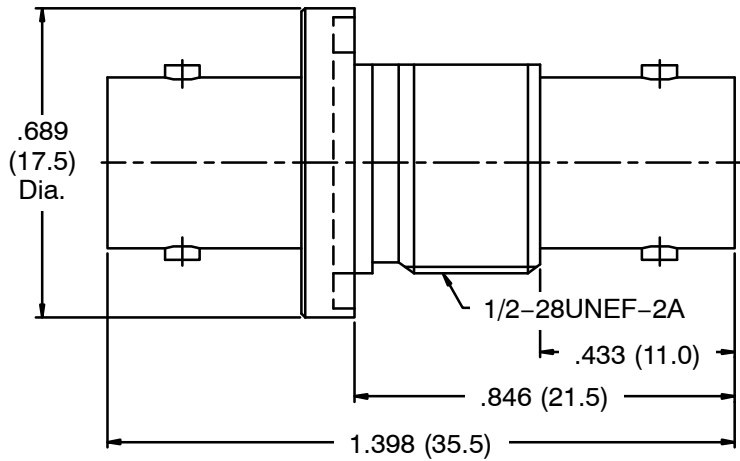
B

A

A



Recommended Mounting Hole



- NOTES: Finish (Plating Thickness in Micro-inches)
1. Brass
 2. Nickel Pl. 100 Min. Thick over Copper Pl. 50 Min. Thick
 3. Phosphor Bronze
 4. Gold Pl. 3 Min Thick over Nickel Pl. 50 Min. Thick over Copper Pl. 50 Min. Thick
 4. DELRIN

RoHS Compliant

Dimensions are in Inches					Part No.		<h1>NTE Electronics</h1>	
Unless Otherwise Specified Tolerances					Approved	Date		Title
0.5-6 = ±0.2						12-4-2018		BNC Jack to Jack Bulkhead Adapter
6-30 = ±0.4					Checked	Date		Drawing No.
30-120 = ±0.6						12-4-2018	06-B005	
120-315 = ±1					Drawn	Date	File No.	
315-1000 = ±1.6						12-4-2018		
1000-2000 = ±2.4								
No	Description	Material	Finish	Q'ty	Drawing No.	Scale	2.5/1 Issue	A

1 2 3 4 5 6 7 8