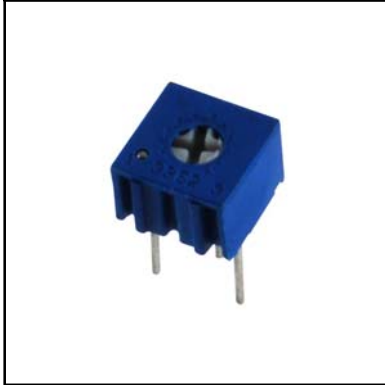


Features

- Economically Priced
- Replaces the Spectrol 76P Series
- RoHS compliant
- Industrial / Sealed
- IC style pins for easier board insertion

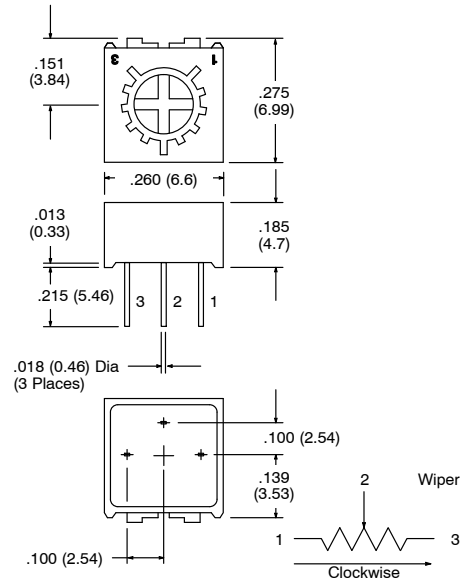


NTE Part No.	Equivalent Spectrol No.	Value (Ohms)	Diag No.
500E-0346	76P-102	1K	T13e
500E-0348	76P-502	5K	T13e
500E-0349	T73YP-10K-10-TU50	10K	T13e
500E-0352	76P-104	100K	T13e
500E-0353	76P-204	200K	T13e
500E-0355	T73YP-1M-10-TU50	1M	T13e

Trimmer, 1/4" Square

Trimmer – Single Turn Cermet, Top Adjust

T13a



Specifications

Electrical

- Effective Travel:** 250° nom
- Resistance Range:** 1K Ω to 1 Meg Ω
- Resistance Tolerance:** $\pm 10\%$
- Absolute Minimum Resistance:** $\leq 1\%$ or 2 Ω
- Temperature Coefficient:** ± 100 ppm/ $^{\circ}$ C.
- Power Rating:** 1/2 Watt @ 70 $^{\circ}$ C derated to 0 Watts @ 125 $^{\circ}$ C
- Withstanding Voltage:** 700V_{AC}
- Insulation Resistance:** $\geq 1G \Omega$ @ 100V_{AC}
- Contact Resistance Variation:** $\leq 1\%$ or 3 Ω

Mechanical

- Starting Torque:** ≤ 35 mN \cdot m
- Rotation Life:** 200 cycles min with max change of $\leq 4\%$ in total resistance
- Resistance Element:** Cermet

Environmental

- Operating Temperature:** -55 $^{\circ}$ C to +125 $^{\circ}$ C
- Electrical Endurance:** 1000 hours