

## Features

- Hot molded carbon element
- One piece housing and bushing
- Stainless steel shaft
- Compact size
- Meets or exceeds specifications of MIL-R-94 — QPL Listed

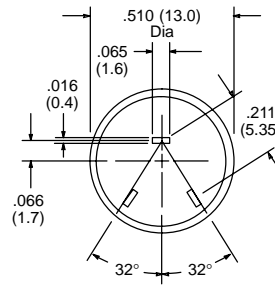
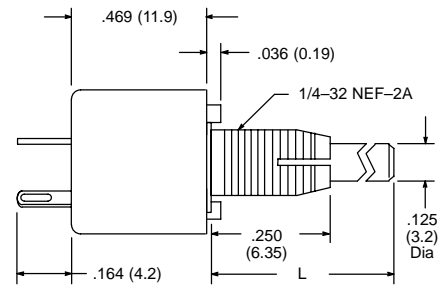


PEC No.	NTE Part No.	Military No.	Value (Ohms)	Shaft Length	Diag No.
SLU1011S20	501-0105	RV6LAYS101A	100	5/8"	P5
SLU5011S20	501-0106	RV6LAYS501A	500	5/8"	P5
SLU1021S20	501-0107	RV6LAYS102A	1K	5/8"	P5
SLU2521S20	501-0108	RV6LAYS252A	2.5K	5/8"	P5
SLU5021S20	501-0109	RV6LAYS502A	5K	5/8"	P5
SLU1031S20	501-0110	RV6LAYS103A	10K	5/8"	P5
SLU2531S20	501-0111	RV6LAYS253A	25K	5/8"	P5
SLU5031S20	501-0112	RV6LAYS503A	50K	5/8"	P5
SLU1041S20	501-0113	RV6LAYS104A	100K	5/8"	P5
SLU2541S20	501-0114	RV6LAYS254A	250K	5/8"	P5
SLU5041S20	501-0115	RV6LAYS504A	500K	5/8"	P5
SLU1051S20	501-0116	RV6LAYS105A	1M	5/8"	P5

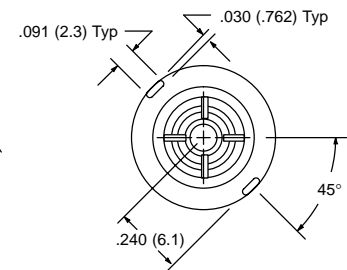
# PEC SLU/RV6LAY Series

## Potentiometer – 1/2 Watt, 1/8" dia. locking shaft

P5



Terminal End



Shaft End

L = Shaft Length (See Table)

## Specifications

### Electrical

**Resistance Range – Linear Taper:** 100Ω to 1 Meg Ω

**Resistance Tolerance:** ±10%

**Power Rating:** 1/2 Watt @ 70°C derated to 0 Watts @ 120°C

**Insulation Resistance:** 10K Meg Ω (Dry)

100K Meg Ω (Wet)

**Dielectric Strength:** 750V RMS at sea level

**Operating Voltage:** 350V subject to power rating

### Mechanical

**Mechanical Rotation:** 295°

**Operating Torque:** 0.5 oz/in to 6 oz/in

**Rotation Life:** 25,000 cycles

### Environmental

**Operating Temperature:** –65°C to +125°C

**Resistance to Soldering Heat:** 350°C for 5 seconds

**Load Life:** 1000 hr. at 70°C