

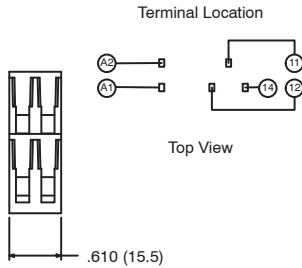
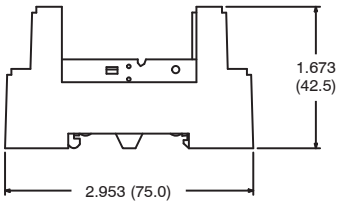
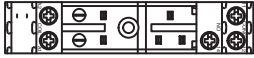
R95-130

Features

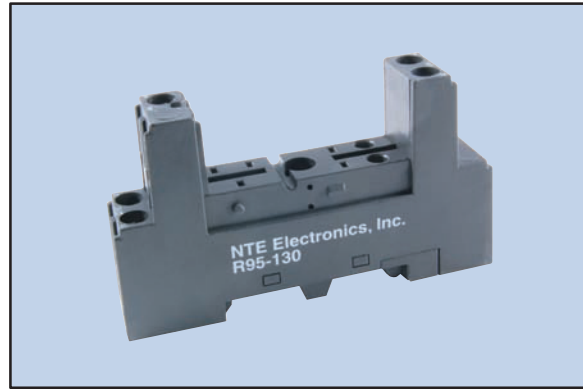
- DIN Rail Mount
- Finger Safe
- SPDT Applications

Electrical Rating:

300 Volts, 12 Amps



5-Pin Slim Line Socket



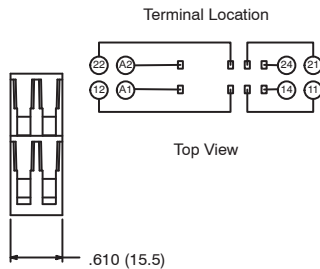
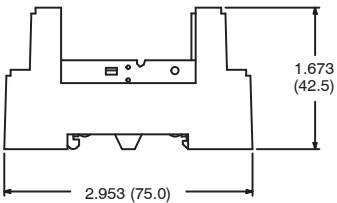
R95-131

Features

- DIN Rail Mount
- Finger Safe
- DPDT Applications

Electrical Rating:

300 Volts, 12 Amps



8-Pin Slim Line Socket

