

Solid State Relays

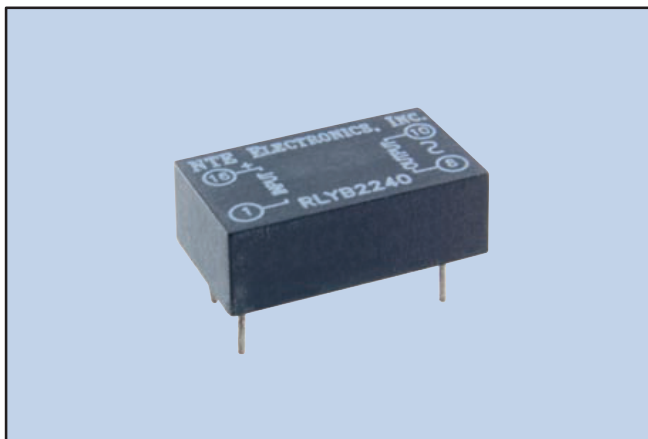
RLYB2240



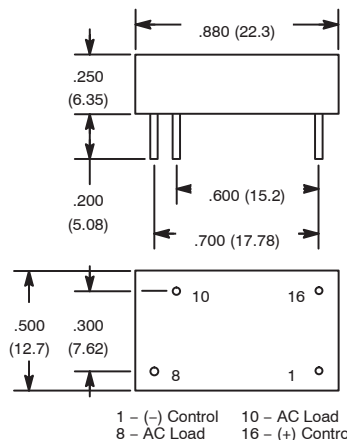
PC Board Mountable, SPST-NO Solid State Relay, 1.5 Amp

Features

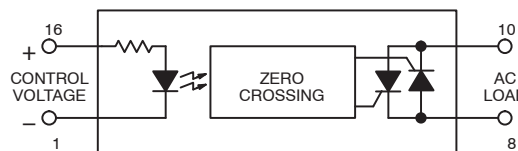
- Logic Compatible Inputs
- 4000V_{rms} Optical Isolation
- Zero Voltage Switching
- PC Mountable



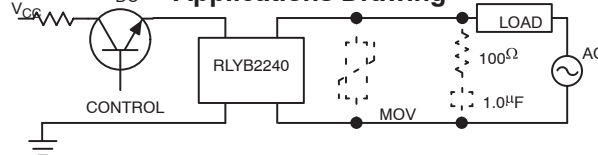
D73



Schematic



Applications Drawing



Note: Under certain low power factor load conditions, it may be advisable to connect an RC snubber network across the relay output. A snubber is also useful in the event of severe high voltage line spikes. While these do not generally cause damage to the relay, they may induce false cycle turn-on.

Input Specifications

Nom. Input Voltage: 5VDC
Max. Input Current: 16mA
Must Turn-On Voltage: 4VDC
Must Turn-Off Voltage: 2VDC

Output Specifications

Nom. AC Voltage RMS (20-500Hz): 240V
RMS Current: 1.5A
Non-Repetitive One Cycle Surge Current (60Hz): 25A (RMS)
Line Voltage Range (20-500Hz): 24-240 VAC
Off-State Current: 1000μA at nom. RMS voltage
Peak On-State Voltage (V_{TM}): 1.7V max. at rated RMS current
Peak Transient Overvoltage: 500V

Electrical Specifications

Dielectric Strength

Input To Output: 4000 VRMS
Terminals to Tab/Case: 4000 VRMS

Max. Rate of Rise Off-State Voltage (dv/dt): 200V/μs
Capacitance (Input-Output): 3.0pF typ.
Response Time: 1/2 Cycle of operating frequency max.

Environmental Characteristics

Operating: -25°C to +85°C
Storage: -25°C to +150°C