

1 2 3 4 5 6 7 8

F

F

E

E

D

D

C

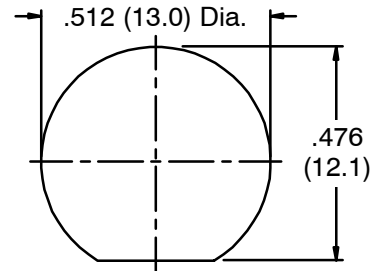
C

B

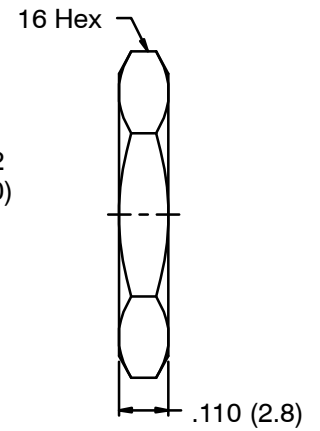
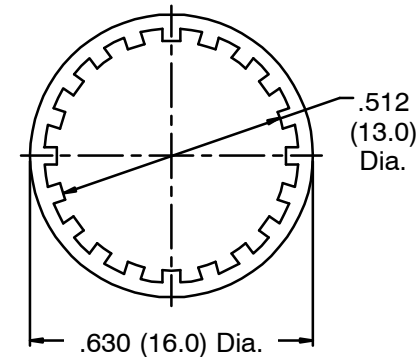
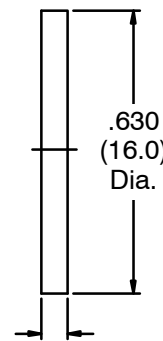
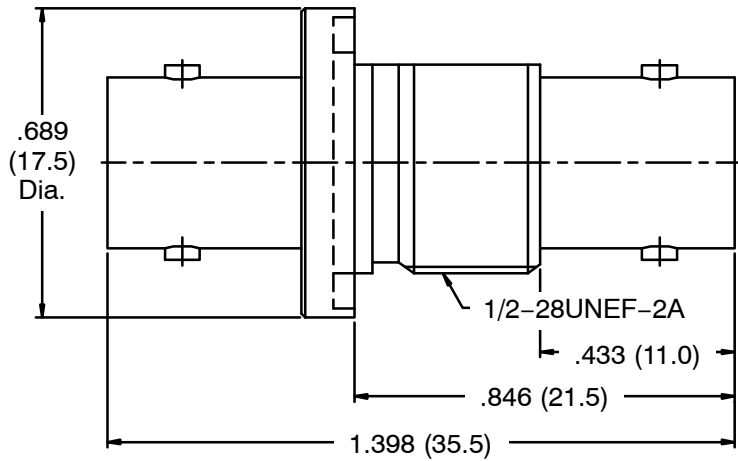
B

A

A



Recommended Mounting Hole



- NOTES: Finish (Plating Thickness in Micro-inches)
1. Brass
 2. Nickel Pl. 100 Min. Thick over Copper Pl. 50 Min. Thick
 3. Phosphor Bronze
 4. Gold Pl. 3 Min Thick over Nickel Pl. 50 Min. Thick over Copper Pl. 50 Min. Thick
 4. DELRIN

RoHS Compliant

Dimensions are in Inches					Part No.		NTE Electronics	
7	Hex-Nut	Note 1	Note 2	1	Approved			Title
6	Lock Washer	Note 1	Note 2	1	Date			BNC Jack to Jack Bulkhead Adapter
5	Gasket	Rubber	Red	1	Date			Drawing No.
4	Contact Pin	Note 3	Note 4	1	Date		06-B005	
3	Insulator	Note 5	Natural	2	Date		File No.	
2	Body	Note 1	Note 2	1	Date			
1	Housing	Note 1	Note 2	1	Date			
No	Description	Material	Finish	Q'ty	Drawing No.	Scale	2.5/1 Issue	A

1 2 3 4 5 6 7 8