

1 2 3 4 5 6 7 8

F

F

E

E

D

D

C

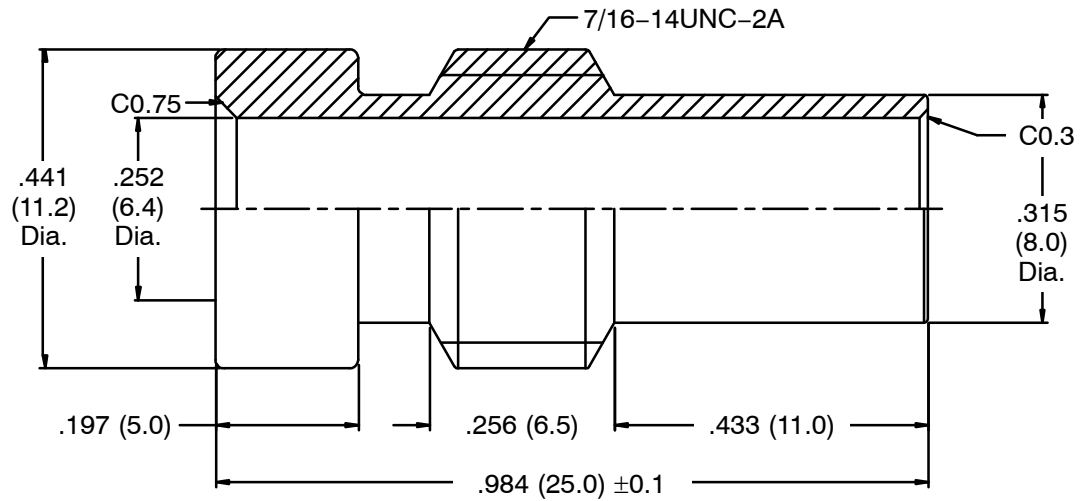
C

B

B

A

A



NOTES: Finish (Plating Thickness in Micro-inches)  
 1. Nickel Pl. 100 Min. Thick over Copper Pl. 50 Min. Thick

RoHS Compliant

Unless Otherwise Specified 1. Remove all burrs 2. Remove sharp edges smaller than C0.1 3. First & Last thread: 45° 4. Surface roughness: Ra 3.2 5. Maximum Concentricity Deflection: 0.1 6. All Dimensions are for after Plating	Dimensions are in Inches		Approved		<h1>NTE Electronics</h1>
	Unless Otherwise Specified Tolerances 0.5-6 = ±0.1 6-30 = ±0.2 30-120 = ±0.3 120-315 = ±0.5 315-1000 = ±0.8 1000-2000 = ±1.2 Angles = ±1°		Checked		
	Material Zinc Diecast		Drawn		Drawing No. 06-U004
	Specification		Scale 4/1	Issue A	Drawn Date 7-17-2012
Finish See Notes					

1 2 3 4 5 6 7 8