



ELECTRONICS, INC.

44 FARRAND STREET
BLOOMFIELD, NJ 07003
(973) 748-5089
<http://www.nteinc.com>

NTE1102 Integrated Circuit 3 Stage Audio Amplifier

Features:

- Recommended for Driver of Push–Pull Output Stage
- Possible to Drive 4 Watt Output Stage
- Wide Range of Supply Voltage

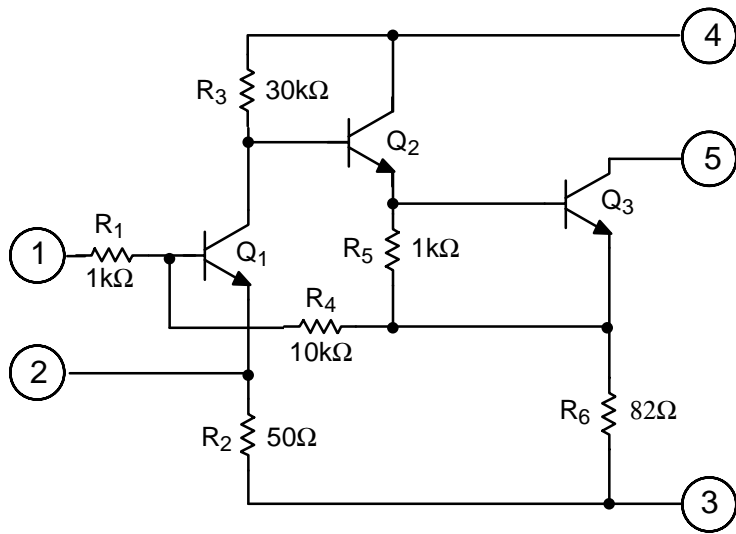
Absolute Maximum Ratings: ($T_A = +25^\circ\text{C}$ unless otherwise specified)

| | |
|--|-------------------------------------|
| Supply Voltage, V_{CC} | 20V |
| Source Current, I_{CC} | 15mA |
| Internal Power Dissipation, P_T | 300mW |
| Input Voltage, V_{IN} | $\pm 3V$ |
| Operating Temperature Range, T_{opr} | -30° to $+75^\circ\text{C}$ |
| Storage Temperature Range, T_{stg} | -55° to $+125^\circ\text{C}$ |

Electrical Characteristics: ($T_A = +25^\circ\text{C}$, $V_{CC} = 10V$ unless otherwise specified)

| Parameter | Symbol | Test Conditions | Min | Typ | Max | Unit |
|-------------------|-----------|--|-----|-----|-----|------------------|
| Collector Current | I_{c5} | | – | 10 | – | mA |
| Output Power | P_{OUT} | $f = 1\text{kHz}$, $Z_L = 1\text{k}\Omega$, $KF = 5\%$ | – | 30 | – | mW |
| Voltage Gain | G_V | $f = 1\text{kHz}$, $Z_L = 1\text{k}\Omega$ | 40 | – | – | dB |
| Input Resistance | R_{IN} | $f = 1\text{kHz}$, $Z_L = 1\text{k}\Omega$ | – | 1.0 | | $\text{k}\Omega$ |
| Output Resistance | R_{OUT} | $f = 1\text{kHz}$ | 10 | – | – | $\text{k}\Omega$ |

Equivalent Circuit



Pin Connection Diagram (Front View)

