

# Pushbutton, Single Pole



## Features

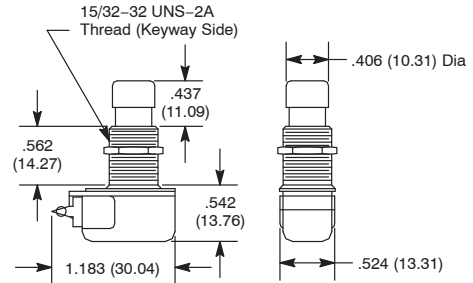
- AC/DC Rated
- Quick Make, Quick Break Contacts
- Self-Cleaning Contacts
- Suitable for Foot Switches
- Typical Actuation Force: 6–8lbs.



NTE Type No.	Circuitry	Action		Actuator	Diag No.
54-066	SPST	OFF	(ON)	Brass/Nickel Plate	S12a
54-067	SPST	ON	(OFF)	Brass/Nickel Plate	S12a
54-068	SPST	ON	OFF	Brass/Nickel Plate	S12b
54-069	SPST	ON	OFF	Brass/Nickel Plate	S12c

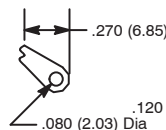
SPECIAL NOTE: ( ) = Momentary Function

S12

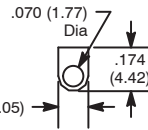


### Terminal Types

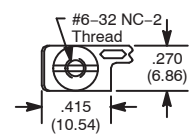
a: Solder Lug (End)



b: Solder Lug (Bottom)



c: Screw (Assembled)



## Specifications

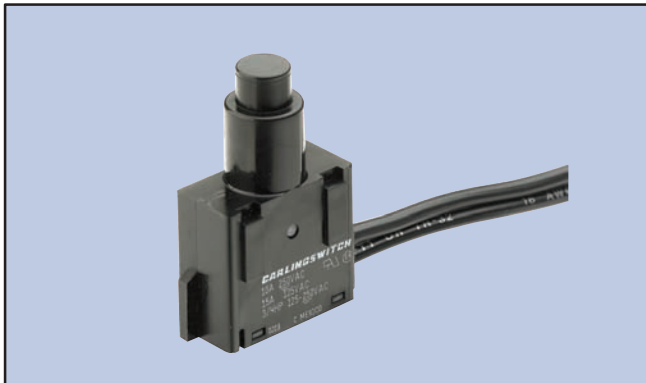
- Current Rating:** 6A 125VAC, 3A 250VAC, AC/DC
- Insulation Resistance:** 100 Megohms (min.)
- Dielectric Strength:** 1000V RMS (min.)
- Temperature Rating:** +32° to +185°F (0° to +85°C)
- Electrical Life:** 100,000 cycles
- Mechanical Life:** 25,000 cycles
- Terminal Type:** Refer to Diag No. in Table
- Mounting Hole:** .500 (12.7)

# Nylon Pushbutton, Single Pole



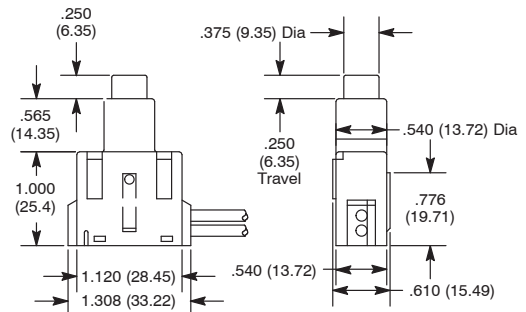
## Features

- Heavy Duty
- 6" Wire Leads
- Both Bushing & Bracket are Made of Nylon



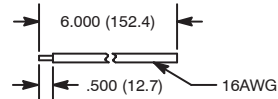
NTE Type No.	Circuitry	Action		Actuator	Diag No.
54-072	SPST	ON	OFF	Nylon	S13

S13



### Terminal Types

#### Integrated Wire



## Specifications

- Current Rating:** 15A 125VAC, 10A 250VAC, 3/4 HP 125–250VAC
- Insulation Resistance:** 100 Megohms (min.)
- Dielectric Strength:** 1000V RMS (min.)
- Temperature Rating:** +32° to +185°F (0° to +85°C)
- Electrical Life:** 100,000 cycles
- Mechanical Life:** 25,000 cycles
- Terminal Type:** Integrated Wire Type
- Mounting Hole:** .550 (13.97)