

# Snap Action, Standard



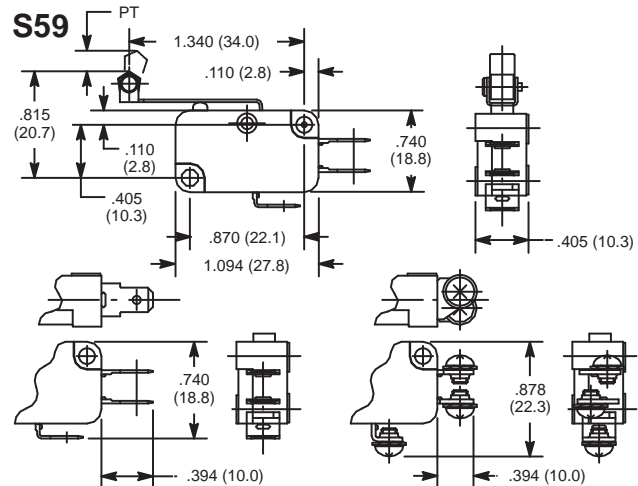
## Features

- Actuator: Hinge Roller Lever



NTE Type No.	Circuitry	Max. Pre-Travel	Min. Over Travel	Max. Operating Force	Max. Differential	Diag No.
54-400 *	SPDT	0.13"	0.09"	125g	0.03"	S59a
54-405 *	SPDT	0.13"	0.09"	115g	0.03"	S59b
54-406	SPDT	0.13"	0.09"	60g	0.03"	S59a

\* Not UL approved or CSA compliant.



a: Quick Connect Terminals

b: Screw Terminals

## Specifications

**Current Rating:** 15A 250VAC, 0.1A 125VDC (54-400, 54-405)  
10A 250VAC, 0.1A 125VDC (54-406)

**Contact Resistance:** 15 Milliohms (15A); 30 Milliohms (10A)(max.) initial

**Insulation Resistance:** 100 Megohms at 500VDC

**Dielectric Strength:** 1000VAC between non-continuous terminals

**Temperature Rating:** -13° to +176°F (-25° to +80°C)

**Electrical Life:** 100,000 (15A); 300,000 (10A) cycles min. (under rated load)

**Mechanical Life:** 50,000,000 cycles min.

**Terminal Type:** Refer to Diag No. in Table

# Snap Action, Standard



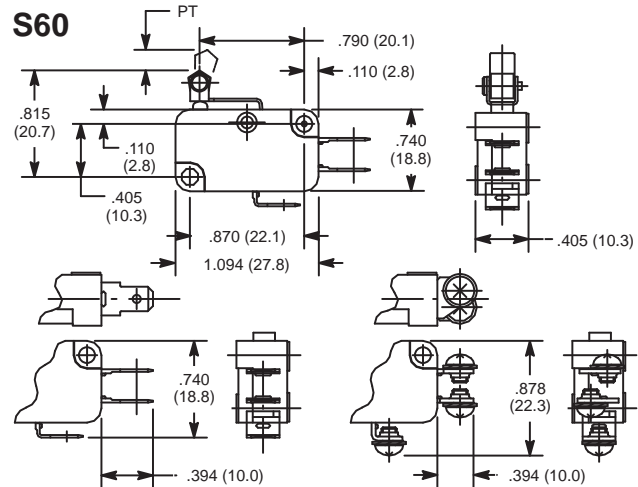
## Features

- Actuator: Short Hinge Roller Lever



NTE Type No.	Circuitry	Max. Pre-Travel	Min. Over Travel	Max. Operating Force	Max. Differential	Diag No.
54-401	SPDT	0.06"	0.04"	240g	0.02"	S60b
54-407 *	SPDT	0.06"	0.04"	240g	0.02"	S60a
54-408	SPDT	0.06"	0.04"	120g	0.02"	S60a

\* Not UL approved or CSA compliant.



a: Quick Connect Terminals

b: Screw Terminals

## Specifications

**Current Rating:** 15A 250VAC, 0.1A 125VDC (54-401)  
10A 250VAC, 0.1A 125VDC (54-407, 54-408)

**Contact Resistance:** 15 Milliohms (15A); 30 Milliohms (10A)(max.) initial

**Insulation Resistance:** 100 Megohms at 500VDC

**Dielectric Strength:** 1000VAC between non-continuous terminals

**Temperature Rating:** -13° to +176°F (-25° to +80°C)

**Electrical Life:** 100,000 (15A); 300,000 (10A) cycles min. (under rated load)

**Mechanical Life:** 50,000,000 cycles min.

**Terminal Type:** Refer to Diag No. in Table