



# AC TO DC ADAPTERS

- Regulated
- 100-240VAC
- 50/60 Hz
- Wall Mount & Desk Top
- C(UL)US Listed
- Folding Plug USB Type
- 2.1mm, 2.5mm & 3.5mm tips
- 5VDC through 24VDC
- 500mA through 6A
- RoHS Compliant

# 5V AC-DC Switching Regulated Power Supply

## Specifications

### AC Input

Voltage Range: 90 – 264 VAC

Input Frequency: 47 – 63 Hz

Inrush Current: 30A Max

### DC Output

Voltage Range: 4.5V – 5.6V

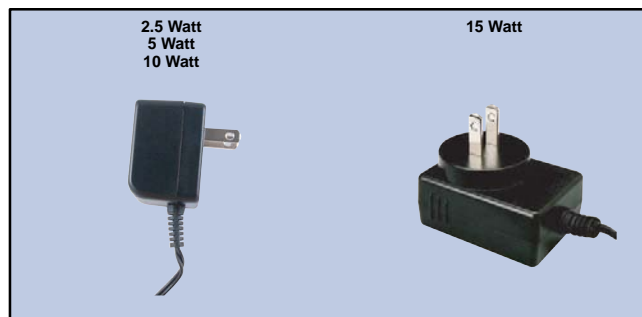
Current Range: 0.1A – 3A

### Reliability

Insulation Resistance: 50M $\Omega$  Min (Input to Output, DC 500V)

MTBF: 50000 Hours

### Plug Types



## Ordering Information

NEW  
NEW  
NEW  
NEW  
NEW  
NEW  
NEW

NTE Type No.	DC Output		Plug Type
	Amps	Wattage	
57-5D-500-1	500mA	2.5	2.1mm x 5.5mm Jack
57-5D-500-2	500mA	2.5	2.5mm x 5.5mm Jack
57-5D-500-3	500mA	2.5	1.35mm ID x 3.5mm OD Plug
57-5D-500-4	500mA	2.5	2.1mm ID x 5.5mm OD Plug
57-5D-500-5	500mA	2.5	2.5mm ID x 5.5mm OD Plug
57-5D-1000-4	1A	5	2.1mm ID x 5.5mm OD Plug
57-5D-1000-5	1A	5	2.5mm ID x 5.5mm OD Plug
57-5D-2000-4	2A	10	2.1mm ID x 5.5mm OD Plug
57-5D-2000-5	2A	10	2.5mm ID x 5.5mm OD Plug
57-5D-3000-4	3A	15	2.1mm ID x 5.5mm OD Plug
57-5D-3000-5	3A	15	2.5mm ID x 5.5mm OD Plug

Need Power Jacks to go with your power supply? You can find them on Page 10.

# 6V AC-DC Switching Regulated Power Supply

## Specifications

### AC Input

Voltage Range: 90 – 264 VAC

Input Frequency: 47 – 63 Hz

Inrush Current: 30A Max

### DC Output

Voltage Range: 5.5V – 6.8V

Current Range: 0.1A – 0.5A

### Reliability

Insulation Resistance: 50M $\Omega$  Min (Input to Output, DC 500V)

MTBF: 50000 Hours

### Plug Types



## Ordering Information

NEW  
NEW

NTE Type No.	DC Output		Plug Type
	Amps	Wattage	
57-6D-500-1	500mA	3	2.1mm x 5.5mm Jack
57-6D-500-2	500mA	3	2.5mm x 5.5mm Jack
57-6D-500-3	500mA	3	1.35mm ID x 3.5mm OD Plug
57-6D-500-4	500mA	3	2.1mm ID x 5.5mm OD Plug
57-6D-500-5	500mA	3	2.5mm ID x 5.5mm OD Plug

Need Power Jacks to go with your power supply? You can find them on Page 10.

# 9V AC-DC Switching Regulated Power Supply



## Specifications

### AC Input

Voltage Range: 90 – 264 VAC

Input Frequency: 47 – 63 Hz

Inrush Current: 30A Max

### DC Output

Voltage Range: 8.55V – 9.45V

Current Range: 0.1A – 1A



### Reliability

Insulation Resistance: 50M $\Omega$  Min (Input to Output, DC 500V)

MTBF: 50000 Hours

### Plug Types



## Ordering Information

NTE Type No.	DC Output		Plug Type
	Amps	Wattage	
57-9D-500-1	500mA	4.5	2.1mm x 5.5mm Jack
57-9D-500-2	500mA	4.5	2.5mm x 5.5mm Jack
57-9D-500-3	500mA	4.5	1.35mm ID x 3.5mm OD Plug
NEW 57-9D-500-4	500mA	4.5	2.1mm ID x 5.5mm OD Plug
NEW 57-9D-500-5	500mA	4.5	2.5mm ID x 5.5mm OD Plug
57-9D-600-1	600mA	5.4	2.1mm x 5.5mm Jack
57-9D-600-2	600mA	5.4	2.5mm x 5.5mm Jack
NEW 57-9D-600-4	600mA	5.4	2.1mm ID x 5.5mm OD Plug
NEW 57-9D-600-5	600mA	5.4	2.5mm ID x 5.5mm OD Plug
57-9D-1000-1	1A	10	2.1mm x 5.5mm Jack
57-9D-1000-2	1A	10	2.5mm x 5.5mm Jack
57-9D-1000-3	1A	10	1.35mm ID x 3.5mm OD Plug
NEW 57-9D-1000-4	1A	10	2.1mm ID x 5.5mm OD Plug
NEW 57-9D-1000-5	1A	10	2.5mm ID x 5.5mm OD Plug

**Need Power Jacks to go with your power supply? You can find them on Page 10.**

# 12V AC-DC Switching Regulated Power Supply

## Specifications

### AC Input

Voltage Range: 90 – 264 VAC

Input Frequency: 47 – 63 Hz

Inrush Current:

6W, 12W, 18W, 24W, 96W, and 120W Types: 30A Max

36W, 48W, and 72W Types: 15A Max

### DC Output

Voltage Range: 11.4V – 12.6V

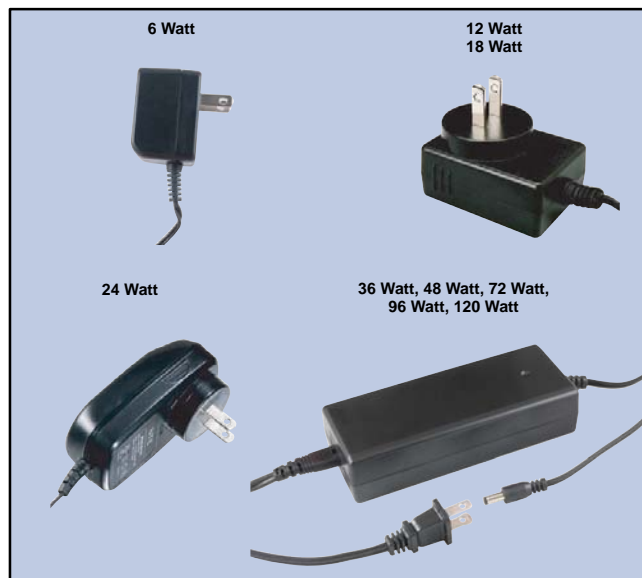
Current Range: 0.1A – 10A



### Reliability

Insulation Resistance: 50MΩ Min (Input to Output, DC 500V)

MTBF: 50000 Hours (20000 Hours for 2A device ONLY)



## Plug Types



## Ordering Information

NTE Type No.	DC Output		Plug Type
	Amps	Wattage	
57-12D-500-1	500mA	6	2.1mm x 5.5mm Jack
57-12D-500-2	500mA	6	2.5mm x 5.5mm Jack
57-12D-500-3	500mA	6	1.35mm ID x 3.5mm OD Plug
57-12D-500-4	500mA	6	2.1mm ID x 5.5mm OD Plug
57-12D-500-5	500mA	6	2.5mm ID x 5.5mm OD Plug
57-12D-1000-1	1A	12	2.1mm x 5.5mm Jack
57-12D-1000-2	1A	12	2.5mm x 5.5mm Jack
57-12D-1000-3	1A	12	1.35mm ID x 3.5mm OD Plug
57-12D-1000-4	1A	12	2.1mm ID x 5.5mm OD Plug
57-12D-1000-5	1A	12	2.5mm ID x 5.5mm OD Plug
57-12D-1500-1	1.5A	18	2.1mm x 5.5mm Jack
57-12D-1500-2	1.5A	18	2.5mm x 5.5mm Jack
57-12D-1500-4	1.5A	18	2.1mm ID x 5.5mm OD Plug
57-12D-1500-5	1.5A	18	2.5mm ID x 5.5mm OD Plug
57-12D-2000-4	2A	24	2.1mm ID x 5.5mm OD Plug
57-12D-2000-5	2A	24	2.5mm ID x 5.5mm OD Plug
NEW 57-12D-3000-3	3A	36	1.35mm ID x 3.5mm OD Plug
NEW 57-12D-3000-4	3A	36	2.1mm ID x 5.5mm OD Plug
NEW 57-12D-4000-4	4A	48	2.1mm ID x 5.5mm OD Plug
NEW 57-12D-6000-4	6A	72	2.1mm ID x 5.5mm OD Plug
NEW 57-12D-8000-4	8A	96	2.1mm ID x 5.5mm OD Plug
57-12D-10000-4	10A	120	2.1mm ID x 5.5mm OD Plug

**Need Power Jacks to go with your power supply? You can find them on Page 10.**

# 18V AC-DC Switching Regulated Power Supply

## Specifications

### AC Input

Voltage Range: 90 – 264 VAC  
Input Frequency: 47 – 63 Hz  
Inrush Current: 30A Max

### DC Output

Voltage Range: 17.1V – 18.9V  
Current Range: 0.1A – 0.5A  
Ripple (at Typ Input Voltage and Load Current) 180mV Max



### Reliability

Insulation Resistance: 50MΩ Min (Input to Output, DC 500V)  
MTBF: 50000 Hours

### Plug Types



2.1mm x 5.5mm Jack	2.5mm x 5.5mm Jack	1.35mm x 3.5mm Plug	2.1mm x 5.5mm Plug	2.5mm x 5.5mm Plug

## Ordering Information

NTE Type No.	DC Output		Plug Type
	Amps	Wattage	
57-18D-500-1	500mA	9	2.1mm x 5.5mm Jack
57-18D-500-2	500mA	9	2.5mm x 5.5mm Jack
57-18D-500-3	500mA	9	1.35mm ID x 3.5mm OD Plug
NEW 57-18D-500-4	500mA	9	2.1mm ID x 5.5mm OD Plug
NEW 57-18D-500-5	500mA	9	2.5mm ID x 5.5mm OD Plug

**Need Power Jacks to go with your power supply? You can find them on Page 10.**

# 24V AC-DC Switching Regulated Power Supply

## Specifications

### AC Input

Voltage Range: 90 – 264 VAC

Input Frequency: 47 – 63 Hz

Inrush Current: 30A Max

### DC Output

Voltage Range: 22.8V – 25.2V

Current Range: 0.1A – 1.2A

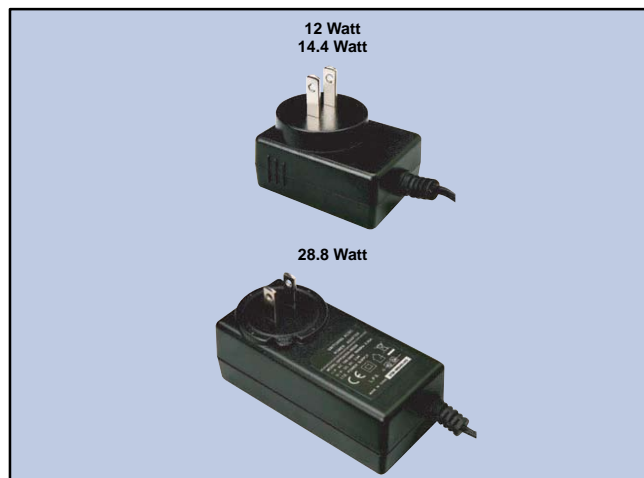
Ripple: 240mV Max (at Typ Input Voltage and Load Current)



### Reliability

Insulation Resistance: 50M $\Omega$  Min (Input to Output, DC 500V)

MTBF: 50000 Hours



## Plug Types



## Ordering Information

	NTE Type No.	DC Output		Plug Type
		Amps	Wattage	
NEW	57-24D-500-3	500mA	12	1.35mm ID x 3.5mm OD Plug
NEW	57-24D-500-4	500mA	12	2.1mm ID x 5.5mm OD Plug
NEW	57-24D-500-5	500mA	12	2.5mm ID x 5.5mm OD Plug
	57-24D-600-1	600mA	14.4	2.1mm x 5.5mm Jack
	57-24D-600-2	600mA	14.4	2.5mm x 5.5mm Jack
NEW	57-24D-600-4	600mA	14.4	2.1mm ID x 5.5mm OD Plug
NEW	57-24D-600-5	600mA	14.4	2.5mm ID x 5.5mm OD Plug
	57-24D-1200-1	1.2A	28.8	2.1mm x 5.5mm Jack
	57-24D-1200-2	1.2A	28.8	2.5mm x 5.5mm Jack
	57-24D-1200-3	1.2A	28.8	1.35mm ID x 3.5mm OD Plug
NEW	57-24D-1200-4	1.2A	28.8	2.1mm ID x 5.5mm OD Plug
NEW	57-24D-1200-5	1.2A	28.8	2.5mm ID x 5.5mm OD Plug

**Need Power Jacks to go with your power supply? You can find them on Page 10.**

# Universal AC-DC Regulated Adapters



## Features

- Level VI Efficiency Standard Compliant
- Switchable, Multi-Voltage Outputs  
57-U1: 3V, 5V, 6V, 7.5V, 9V, 12V, 15V @ 1A  
57-U2: 3V, 5V, 6V, 7.5V, 9V, 12V @ 2.5A
- Includes 2 Reversible Polarity 2.1mm x 5.5mm Tips:  
Right Angle (57-UA1)  
Straight (57-UA2)

## Specifications

### AC Input

Voltage Range: 100 – 240 VAC

Input Frequency: 50 – 60 Hz

Inrush Current: 50A Max

### DC Output

Voltage Range:

57-U1: 3V – 15V

57-U2: 3V – 12V

Current Range:

57-U1: 0.01A – 1A

57-U2: 0.01A – 2.5A

Ripple (at Typ Input Voltage and Load Current) 200mV Max

### Environmental

Operating Temperature: 0° to +40°C, Full Load, Normal Operation

### Reliability

Insulation Resistance: 50M $\Omega$  Min (Primary to Secondary, DC 500V/60s)

MTBF: 30000 Hours



### Tip Types

<b>57-UA1</b> 2.1mm x 5.5mm Right Angle	<b>57-UA2</b> 2.1mm x 5.5mm Straight
<b>57-UA3</b> 1.35mm x 3.5mm Right Angle	<b>57-UA4</b> 1.35mm x 3.5mm Straight
<b>57-UA5</b> 2.5mm x 5.5mm Right Angle	<b>57-UA6</b> 2.5mm x 5.5mm Straight

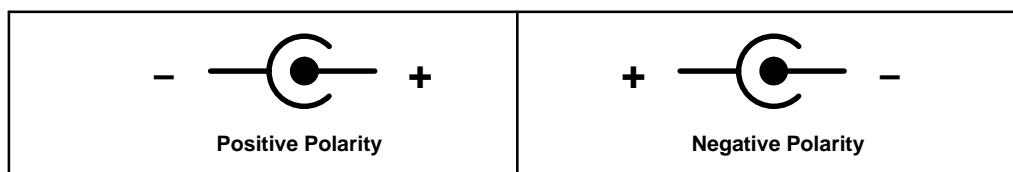
### Ordering Information

NTE Type No.	DC Output		
	Amps	Wattage	Output Voltage
NEW 57-U1	1A	15	3V, 5V, 6V, 7.5V, 9V, 12V, 15V
NEW 57-U2	2.5A	30	3V, 5V, 6V, 7.5V, 9V, 12V

**Need Power Jacks to go with your power supply? You can find them on Page 10.**

## Instructions

1. Before using, please consult the user guide or study the rating label of your device to determine the correct voltage and current. If 1A is required, use the 57-U1 and select the correct voltage (3, 5, 6, 7.5, 9, 12 or 15VDC). If 2.5A is needed, use the 57-U2 and select the correct voltage (3, 5, 6, 7.5, 9 or 12VDC).
2. Set the adapter's switch to the desired voltage BEFORE you connect it to your device.
3. If the adapter is not compatible with the voltage and current requirements of your device, it can cause permanent damage to your device or the adapter. Also, look for an image like the ones below on your device's rating label or DC input jack to determine the correct polarity needed.



Requires a positive tip polarity  
Align the (+) symbol on the included plug with the word TIP on the adapter

Requires a negative tip polarity  
Align the (-) symbol on the included plug with the word TIP on the adapter



# USB AC Adapter



## Features

- Folding, 2-Prong Plug
- Perfect for use with cell phones, tablets, MP3 players, handheld game systems, digital cameras, GPS devices and more!

## Specifications

### AC Input

Voltage Range: 100 – 240 VAC

Input Frequency: 50/60 Hz

Inrush Current: 400mA Max

### DC Output

Voltage: 5V

Current: 1A

### Ordering Information

NTE Type No.	DC Output		Plug Type
	Amps	Wattage	
NEW 57-5D-1000-U	1A	5	USB Standard Type A Receptacle



# 4-Port USB AC Adapter



## Features

- Folding, 2-Prong Plug
- Built-In Smart Chip Testing Fuses and Over-Temperature, Over-Current, Overload, and Short-Circuit Protection
- Perfect for use with smart phones, tablets, MP3 players, handheld game systems, digital cameras, GPS devices and more!

## Specifications

### AC Input

Voltage Range: 100 – 240 VAC

Input Frequency: 50/60 Hz

Inrush Current: 800mA Max.

### DC Output

Voltage: 5V

Current: 4A (2.1A Max one port, 4A Max all ports total)

### Ordering Information

NTE Type No.	DC Output		Plug Type
	Amps	Wattage	
NEW 57-5D-4000-U	4A	20	4 USB Standard Type A Receptacles





# Power Bank

## Features

- Includes Micro USB Cable
- Charges Most Mobile Phones, iPad, PSP, MP3/MP4 Players, PDAs, etc.
- Micro USB Input Port, Standard USB Output Interface

## Specifications

### Input

Rated Voltage: 5VDC

Working Voltage Range: 4.5V to 5.5VDC

Current: 1 Amp

Built-In Battery: 2600mAh

Charging Voltage: 4.3V  $\pm$  0.05V

Charging Current: 400 to 600mA

Life Cycle:  $\leq$  500 charges under normal usage

### Output

Un-Loaded Voltage: 4.8V to 5.25VDC

Loaded Voltage: 4.8V to 5.25VDC (Output Port Measurement)

Rated Current: 1 Amp

Conversion Efficiency:  $\geq$  80%

### Work Environment

Working Temperature: 0° to +40°C

Storage Temperature: -20° to +40°C

Relative Temperature:  $\leq$  90%

Atmospheric Pressure: 85 to 106Kpa

### Ordering Information

NTE Type No.	Plug Type
NEW 57-PB1	Micro USB Input / Standard USB Output



# Polarity Reversal Plug



## Features

- Single 5' Cable Contains Jack on One End and Plug on the Other
- Can be Used to Reverse Polarity on Either Positive or Negative Center Pin Adapters



### Plug Types

2.1mm x 5.5mm Jack	2.5mm x 5.5mm Jack	2.1mm x 5.5mm Plug	2.5mm x 5.5mm Plug

### Ordering Information

NTE Type No.	Plug Type
NEW 57-PRP1	2.1mm x 5.5mm Jack and Plug
NEW 57-PRP2	2.5mm x 5.5mm Jack and Plug

# Power Jacks

## Features

- Panel Mount Types
- Metal Housing

## Specifications

**Rating:** 30VDC, 5A (57-PJ10 thru 57-PJ40)  
 24VDC, 2A (57-PJ50 thru 57-PJ80)  
 30VDC, 2A (57-PJ90 Only)

**Contact Resistance:**  $\leq 0.03\Omega$

**Insulation Resistance:**  $\geq 100M\Omega$

**Withstanding Voltage:** 500VAC

**Inserting and Extraction Force:** 3 to 20N

**Life Test:** 5000 cycles

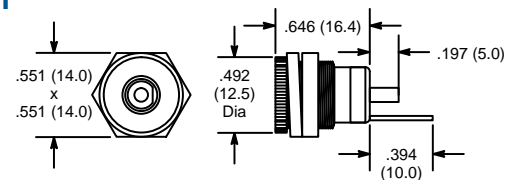
**Temperature:**  $-20^{\circ}$  to  $+85^{\circ}\text{C}$

## Ordering Information

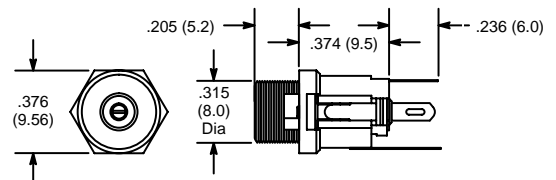
	NTE Type No.	Description	Mounting Hole	Diag No.
	57-PJ10	5.5mm x 2.1mm Jack	.437" (11.0)	JK-01
	57-PJ20	5.5mm x 2.5mm Jack	.437" (11.0)	JK-01
	57-PJ30	5.5mm x 2.1mm Jack	.313" (8.0)	JK-02
	57-PJ40	5.5mm x 2.5mm Jack	.313" (8.0)	JK-02
NEW	57-PJ50	5.5mm x 2.1mm Jack	.320" (8.1)	JK-03
NEW	57-PJ60	5.5mm x 2.5mm Jack	.320" (8.1)	JK-03
NEW	57-PJ70	5.5mm x 2.1mm Jack	.320" (8.1)	JK-04
NEW	57-PJ80	5.5mm x 2.5mm Jack	.320" (8.1)	JK-04
NEW	57-PJ90	5.0mm x 2.1mm Jack	.350" (8.9) x .430" (10.9)	JK-05



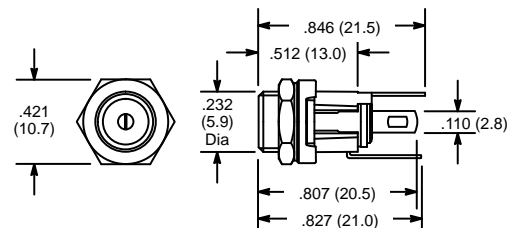
### JK-01



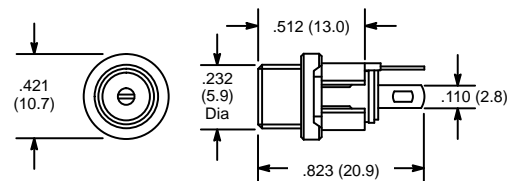
### JK-02



### JK-03



### JK-04



### JK-05

