

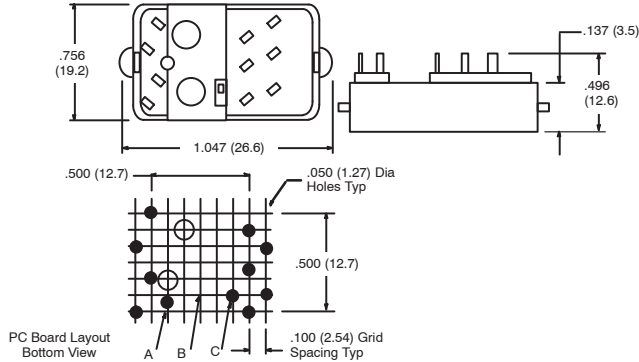
R95-102

Features

- PC Board Mount

Electrical Rating:

1000 Volts, 5 Amps



10-Pin Blade Socket



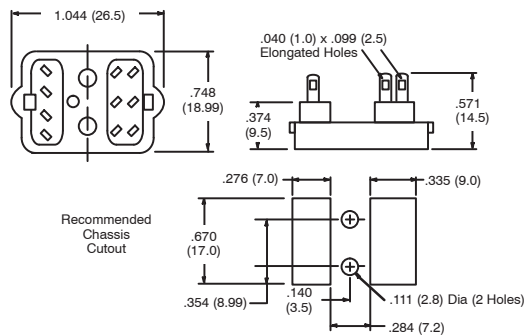
R95-103

Features

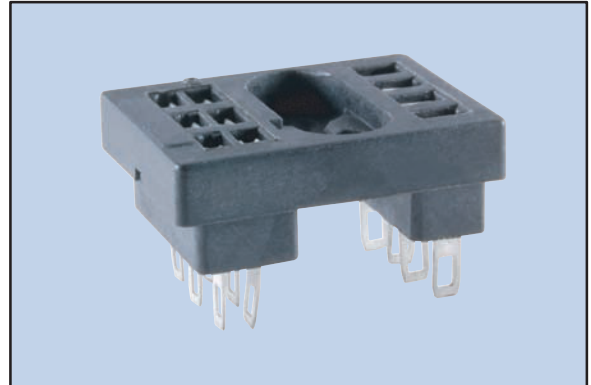
- Panel Mount
- Solder Terminals

Electrical Rating:

1000 Volts, 5 Amps



10-Pin Blade Socket



R95-104

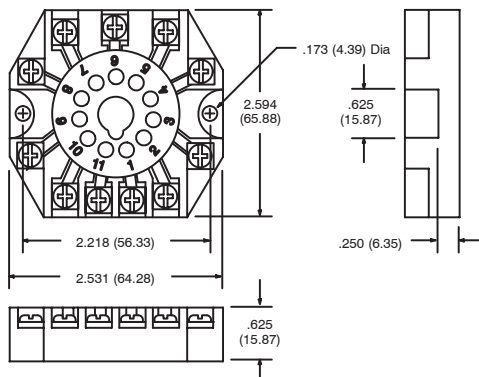


Features

- Panel/Surface Mount
- Pressure Clamp Screws
- Screws: 6-32 x 5/16", Steel, Nickel Plated.

Electrical Rating:

300 Volts, 10 Amps



11-Pin Octal Socket

