



ELECTRONICS, INC.  
 44 FARRAND STREET  
 BLOOMFIELD, NJ 07003  
 (973) 748-5089  
<http://www.nteinc.com>

## NTE30115 LED – Tri Color 5mm High Bright Red/Green/Blue

**Features:**

- RoHS Compliant
- AlGaInP Red/Green/Blue LED
- 5.0mm x 8.7mm x 21mm
- High Luminous Intensity, High Reliability and Long Life
- Common Cathode Pin Configuration

**Applications:**

- LCD Backlight Instruction Lighting on Car Instrument and the Electronic Products Used in Surface Mounted Construction.

**Absolute Maximum Ratings:** ( $T_A = +25^{\circ}\text{C}$  unless otherwise specified)

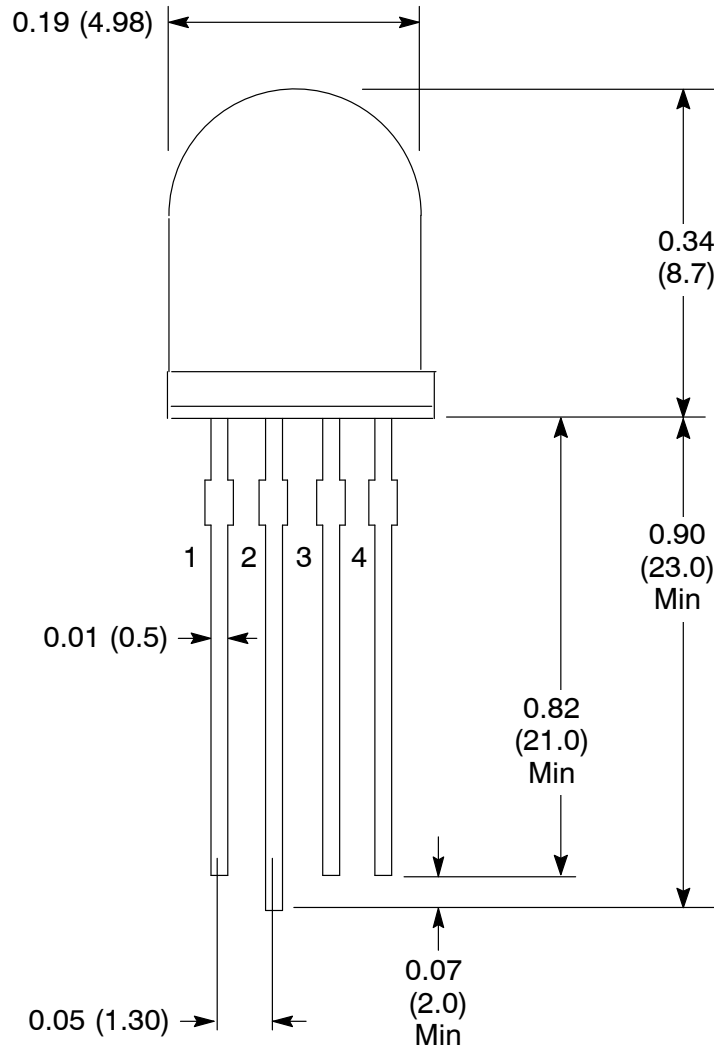
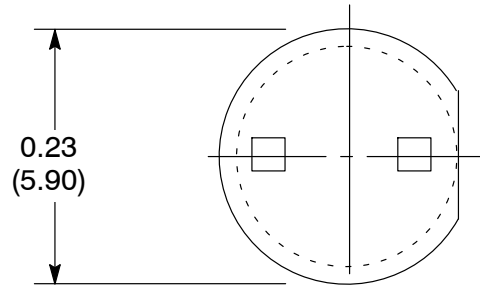
Power Dissipation, $P_D$ .....	80mW
Pulse Forward Current (Note 1), $I_{FP}$ .....	100mA
Peak Forward Current, $I_F$ .....	20mA
Reverse Voltage, $V_R$ .....	5V
Operating Temperature Range, $T_{opr}$ .....	$-30^{\circ}\text{C}$ to $+85^{\circ}\text{C}$
Storage Temperature Range, $T_{stg}$ .....	$-40^{\circ}\text{C}$ to $+85^{\circ}\text{C}$

Note 1. Pulse Width: Max 10ms, Duty Ratio: Max 1/10.

**Electro-Optical Characteristics:** ( $T_A = +25^{\circ}\text{C}$  unless otherwise specified)

Parameter	Symbol	Test Conditions	Min	Typ	Max	Unit				
View Angle of Half Power, R/B	$2\theta_{1/2}$		–	30	–	deg				
Forward Voltage	$V_F$	$I_F = 20\text{mA}$								
Red							1.8	2.2	2.6	V
Green							2.8	3.2	3.6	V
Blue	2.8	3.2	3.6	V						
Reverse Current, R/B	$I_R$	$V_R = 5\text{V}$	–	10	–	$\mu\text{A}$				
Luminous Intensity	$I_V$	$I_F = 20\text{mA}$								
Red							2000	4000	–	mcd
Green							4000	6000	–	mcd
Blue	2000	4000	–	mcd						
Dominant Wave Length (Note 2)	$\lambda_d(\text{HUE})$	$I_F = 20\text{mA}$								
Red							615	625	630	nm
Green							515	520	530	nm
Blue	455	460	470	nm						





- 1. Red +
- 2. Common Cathode Lead -
- 3. Blue +
- 4. Green +