

# Panic Switch

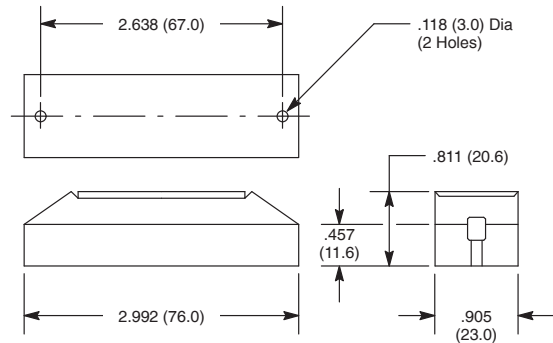
## Features

- Surface Mount Type
- Push Button Function
- Emergency Marking on the Button



| NTE Type No. | Circuitry | Action                    | Actuator    | Diag No. |
|--------------|-----------|---------------------------|-------------|----------|
| 54-634       | SPST-NO   | NO for Closed Loop System | Microswitch | S105     |

## S105



## Specifications

**Contact Rating:** 10W/VA  
**Contact Resistance:** 150 milliohms.  
**Contact Material:** Silver over Palladium  
**Switching Voltage:** 200 VDC max.  
**Switching Current:** 500mA max.  
**Insulation Resistance:** 10 gigohms  
**Shock Resistance:** 30G for 11mS  
**Vibration Resistance:** 20G (10 to 1000Hz)  
**Life Expectancy:** 20,000,000 cycles (resistive load, 12VDC, 250mA)  
**Terminal Type:** Y Type Tin Plated Brass

# Magnetic Plunger Switch

## Features

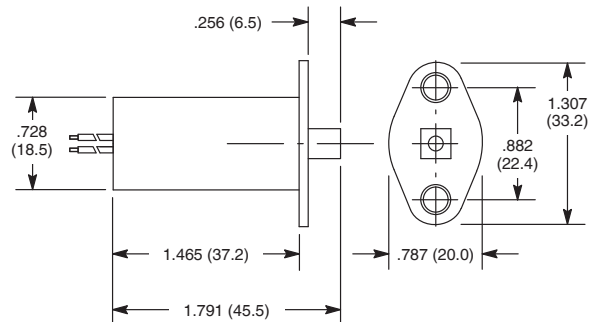
- 3/8" Dia Mounting Hole
- Flange for Reliable Retention
- 3mm Pre-Travel Stroke and 7mm Overall Operating Stroke
- 18" Long Wire Leads
- Screw Provided



| NTE Type No. | Circuitry | Action                    | Actuator | Diag No. |
|--------------|-----------|---------------------------|----------|----------|
| 54-635       | SPST-NO   | NO for Closed Loop System | Magnet   | S106     |

NOTE: The circuit is open when the plunger is not depressed.

## S106



## Specifications

**Contact Rating:** 10W/VA  
**Contact Resistance:** 150 milliohms.  
**Contact Material:** Ruthenium Oxide over Palladium  
**Switching Voltage:** 200 VDC max.  
**Switching Current:** 500mA max.  
**Insulation Resistance:** 10 gigohms  
**Shock Resistance:** 30G for 11mS  
**Vibration Resistance:** 20G (10 to 1000Hz)  
**Life Expectancy:** 20,000,000 cycles (resistive load, 12VDC, 250mA)  
**Terminal Type:** Wire Leads  
**Mounting Hole:** .375" (9mm)